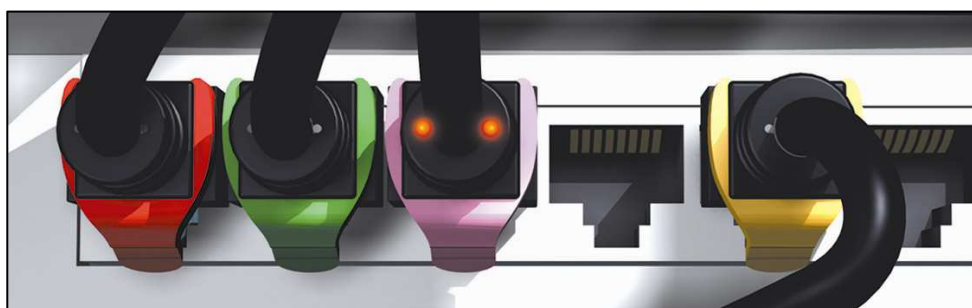


PCI6Patch

Cat 6 FTP RJ45 patch cords

Technical Data Sheet

Patent Pending



Cat 6 RJ 45 Patch Cords :

PatchSee RJ 45 Patch Cords are designed, and individual tested for connecting the network equipment to patch panel and network user outlet. They are warranted for cat 6 TIA/EIA-568-B-2.1 June 2002 Channel test on a Permanent Link certified for transmission frequencies of up to 250 MHz and **designed to be compatible with the 10 GigaBits applications.**

PatchSee Concept and main characteristics

- Light identification by plastic optical fiber,
- PCI (Patchsee Connector Insert : Owner PatchSee)
 - o designed to improve NEXT and RL for 10 Giga Bits applications,
 - o designed for high density panels and active components (same size as the plug in width and height)
- Warranty 25 years for Channel Cat 6 link on Cat 6 Permanent Link certified and ready for 10 GigaBits applications
- Individual tested: each Patch Cord is individual tested (Return Loss, Attenuation, NEXT, etc...) and all the reports tests are archiving on computer database.
- Many lengths 2 feet (0.6 m) up to 20 feet (4.9 m) for patch panel and terminal link,
- Color cable: Black with white marking,
- Color boot: Grey with white marking,
- Movable color clip, 16 colors available,
- Packaging: boxes of 6 or 12 pieces, depending of the length,
- Available in cross patch cord,
- Marking on the boot: length and P/N,
- Unique serial number marking on the cable,

Technical Data Sheet

Construction

Number of pairs	4
Type	S-STP
Conductor	Stranded bare copper wire, 7/0.16 +/- 0.005 mm
Gage	26 AWG
Insulation	Foam Skin Polyethylene
Individual pair screen	Al-laminated metal pair foil
Pair Screen	n a
Optical wave guide	2 POF 0.5 mm
Drain	Stranded drain wire tinned copper, 26 AWG
Jacket	LSOH Black with white printing (LSOH : IIEC 60332-3 Cat C, Low Smoke : IIEC 61189-2C12, Halogen Free : IPC4101-A)
Overall diameter	5.9 +/- 0.2 mm
Plug housing	UL 1863 Polycarbonate , individual wire guide and management bar
Contacts	Moved contacts
Contact Plating	50 μ inches gold minimum (1.2 μm)
Shielding	Tin-plated

Mechanical Properties of the cable

Fire Propagation Test	Temperature range During operation	Fire load	Bending radius
UL 1581 VW 1 Flame test	-20°C up to +75°C	372 MJ/km	>25 mm without load

Electrical Properties of the cable (at 20°C +/- 5°C)

Conductor resistance	Insulation resistance	Mutual Capacitance	Impedance 1-100MHz	Impedance 100-250MHz	Propagation delay	Test voltage
< 140Ω/km	> 150 MΩ/km	56nF/km	100 +/- 15 Ω	100 +/- 15 Ω	< 45 ns/100m	2 500 V - 3 seconds